

# THE SHORELINE HOTEL OTAGO RALLY

24 - 25 MAY 1996

PROMOTED BY THE OTAGO SPORTS CAR CLUB

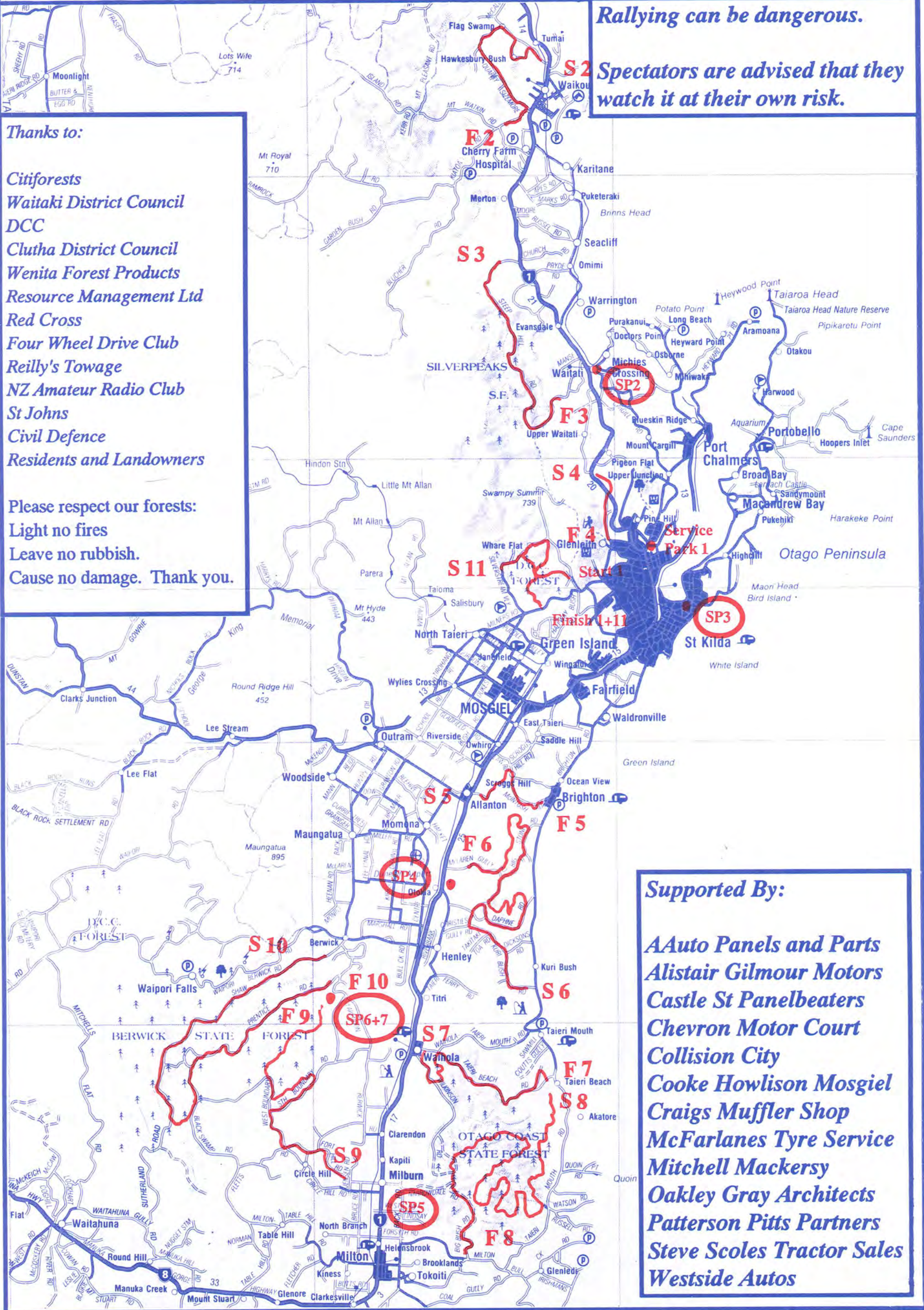
*Rallying can be dangerous.*

*Spectators are advised that they watch it at their own risk.*

Thanks to:

Citiforests  
Waitaki District Council  
DCC  
Clutha District Council  
Wenita Forest Products  
Resource Management Ltd  
Red Cross  
Four Wheel Drive Club  
Reilly's Towage  
NZ Amateur Radio Club  
St Johns  
Civil Defence  
Residents and Landowners

Please respect our forests:  
Light no fires  
Leave no rubbish.  
Cause no damage. Thank you.



Supported By:

AAuto Panels and Parts  
Alistair Gilmour Motors  
Castle St Panelbeaters  
Chevron Motor Court  
Collision City  
Cooke Howlison Mosgiel  
Craigs Muffler Shop  
McFarlanes Tyre Service  
Mitchell Mackersy  
Oakley Gray Architects  
Patterson Pitts Partners  
Steve Scoles Tractor Sales  
Westside Autos



## FRIDAY NIGHT 24 MAY

The first car leaves the SHORELINE HOTEL at 6.30pm and tours to the Octagon, in central Dunedin for the official start by Sukhi Turner, the Mayor of Dunedin at 6.50pm.

**Special Stage 1**  
17.7km  
**Whare Flat**  
First Car Starts at 7.10pm  
Best viewing from the Pineapple track carpark, start and finish.

**Service Park** at Gardens New World. First car arrives at 7.50pm and stays 15 minutes.

**Special Stage 2**  
15.6km  
**Waikouaiti**  
First Car Starts at 8.45pm  
Best viewing from any side road off SH1, start and finish.

**Special Stage 3**  
19.5km  
**Silver Peaks**  
First Car Starts at 9.25pm  
Best viewing from start and finish.

**Service Park** at Waitati. First car arrives at 9.50 and stays 20 minutes.

**Special Stage 4**  
4.9km  
**Leith Valley**  
First Car Starts at 10.25pm  
Best viewing from start and finish.

**Service Park** at Timaru St. First car arrives at 10.45pm and stays 15 minutes. From here cars go into an overnight safe storage.

## THE DO'S AND DON'TS

Rallying is a spectacular sport to watch and we hope that you will come out and follow it. There are a few safety rules that we ask you to observe as there is no guarantee that the cars you are watching are under control!!

### DO...

- Bring your gumboots
- Obey any Marshall
- Leave your dog at home
- Park considerately

### DON'T...

- Assume that you can hear a car coming
- Stand on the outside of a corner
- Stand where you can't make a hasty escape
- Stand on anything unstable like logs
- Assume that the rally cars will arrive at even intervals

**The road is only open after a special stage when the tail car goes by. The Tail Car is clearly marked. Until it arrives expect a rally car at any time, even if there has been a long break.**

## RESULTS

Up to date results will be broadcast over **Radio Newstalk ZB**.

Additionally you can phone **0900 33 000**, for up to date results.

## SATURDAY 25 MAY

The first car leaves the SHORELINE HOTEL at 8.45am and proceeds directly to special stage five

**Special Stage 5**  
8.2km  
**McIntosh Rd**  
First Car Starts at 9.15am  
Best viewing from intersection mid stage. Access via Law Rd or Brighton - Scroggs Hill Rd.

**Special Stage 6**  
32.5km  
**McLaren Gully Rd**  
First Car Starts at 9.45am  
Best viewing from any of the intersecting roads.

**Service Park** at Old Henly Rd. First car arrives at 10.20am and stays 20 minutes.

**Special Stage 7**  
17.5km  
**Taieri Beach**  
First Car Starts at 11.00am  
Best viewing from Waiholo Taieri Beach Rd, start and finish.

**Special Stage 8**  
45.4km  
**Big Bush**  
First Car Starts at 11.30am  
Best viewing from Windy Ridge Rd, Taieri Mouth - Milton Rd, start and finish.

**Service Park** and regroup at Forsythe Rd, Milton. First car arrives at 12.15pm and stays 20 to 45 minutes.

**Special Stage 9**  
28.0km  
**Fort Hill**  
First Car Starts at 1.15pm  
Best viewing from any of the intersecting roads or the start.

**Service Park** at Berwick Forest. First car arrives at 1.45pm and stays 20 minutes.

**Special Stage 10**  
50.0km  
**Shaws Hill**  
First Car Starts at 2.20pm  
Viewing difficult, try start and finish.

**Service Park** at Berwick Forest. First car arrives at 3.05pm and stays 15 minutes.

**Special Stage 11**  
11.1km  
**Whare Flat**  
First Car Starts at 3.55pm  
Best viewing from the Pineapple track carpark, start and finish.

After stage 11 the cars proceed over the finish ramp at the Octagon ( 1st car 4.50pm), then on to the SHORELINE HOTEL Parc Ferme (1st car 5.00pm)

## USE OF THE ROADS

The Dunedin area is blessed with many kilometres of really fine roads suitable for rallying. It's an asset that many other motorsport clubs just don't have, and it makes us especially lucky. However, their use is only possible with the permission and tolerance of the road owners, residents and other users. This is gratefully acknowledged by the Otago Sports Car Club.

Over the past few years a majority of the roads used have been those operated and maintained by Wenita Forest Products in the Coast and Berwick forests. Wenita have always supported our motorsport, even when it involved considerable trouble for themselves.

Excellent co-operation and assistance is also extended by the Dunedin City Council, Citiforests, Waitaki District Council, Clutha District Council and Resource Management Ltd. The Otago Sports Car Club would especially like to thank these roading authorities for their co-operation.

## HOW TO FIND A GOOD SPECTATOR SPOT

Remember that the drivers have never seen the road before and that they are driving 'blind'. Although they have a navigator, they only guide the driver at intersections and at danger spots (as well as providing a bit of moral support at times of stress!).

### IF YOU WANT TO SEE A CRASH

Well of course all the drivers hope that it's not them who are providing this form of entertainment. However corners that tighten unexpectedly, that are off-camber, have a big bump in them, change direction suddenly etc... These sorts of things are always causing problems for the drivers. Bridges, gateways and fords on the other hand are marked in the navigators roadbook and are less likely to cause anything spectacular.

### IF YOU WANT TO SEE SOME AWESOME DRIVING

Find a spot where the road is not too narrow, bumpy or rutted, and where the drivers can more or less see where they are going. With any luck there'll be a spot where you can see a whole series of corners. It's here where the cars can really get loose!

### IF YOU WANT TO WORK OUT WHO'S GOING FAST

Except for the top ten to fifteen seeded cars who start at two minute intervals, the field starts at one minute gaps. So if a car is less than a minute behind the car in front then it's catching it. If you find a spot where you can see a reasonably long section of road then time each car with a stopwatch to see who's fastest.

## THE OTAGO SPORTS CAR CLUB

The Otago Sports Car Club is one of the oldest motorsport clubs in NZ, being founded in 1947. It is the only club that caters for modern motorsport in the Dunedin region.

The club is extremely active, running all forms of motorsport, catering for all types of cars. If you want to know more about the car club then contact either Malcolm Budd at 488 0488 or Roger Oakley at 453 6466. Alternatively visit the clubrooms any Thursday night, they're open from 8.30pm onwards and are at 97 Larnach Rd.

## EXTREMELY COMPETITIVE NATIONAL CHAMPIONSHIP

Dunedin is fortunate that this rally is the first full round of the Championship. All the cars are in top condition, no-one has dropped out yet, and best of all the drivers are desperate to get off to a good start! Desperate drivers make for excellent spectating. Don't expect to see anyone holding back!

The fastest cars are the Group A cars and this year a three way battle is expected between Joe McAndrew (Prodrive Subaru Legacy), Brian Stokes (Escort Cosworth) and Geoff Argyle (Nissan Pulsar GTiR). All these guys are fast and talented. They'll need to be if they're to keep ahead of the other Gp A opposition, not to mention the Gp N cars.

Group N, the class for 'standard' cars is extremely tight, although 'standard' is definitely a relative term, when there's 250 horsepower on tap. These cars are fast. The main competition is between the Subaru Imprezas and Mitsubishi Lancers. Greg Graham (Subaru) from Christchurch was the 1995 winner of the Otago Rally and is leading this bunch but any of the others could win, it's that close. Last years National Champion, Reece Jones (Mitsubishi) pushed Graham the hardest at Otago in 1995, this year, well it's anyone's guess, but keep an eye out for Marty Rostenburg in a Evo 3 Mitsubishi and Stumpy Holmes (Subaru). Last year they both showed real pace.

The two wheel drive cars are generally highly developed Toyota Corollas. In the South Island the fastest include Stuart Warren, Tony Aimers, Ross Teasdale and Roger McKay. The trouble with these guys is that they go out and embarrass quite a few of the fancy four wheel drive cars. They're good to watch.